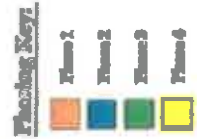




**PROJECT**  
 Kingsnton Plantation  
 Landscape Master Plan  
 Kingsnton Plantation  
 King County - South Carolina  
 Master Association

**PREPARED BY**  
 HERRICK  
 12/15/02  
 12/15/02

**SCALE**  
 1" = 100'  
 1" = 200'



**Purpose:**

This plan will serve as a guide to the systematic implementation of the planting phase contained herein. The goals of this Planting Plan are to:

- Allow for the cohesive implementation of particular plant material in such a way that all communities within Kingsnton Plantation can attain a level of enhancement.
- Promote a total enhancement to create visible form and function - Queensway Blvd. & Lake Dr.

**How to Use This Plan:**

The Landscape Planting Plan delineates the implementation of enhancing implementation phases with a corresponding color-coded planting key. This plan recommends four phases:

- Phase 1: Buildings & common areas immediately visible from Queens Blvd. & Lake Dr.
- Phase 2: Buildings & common areas more distant to Kingsnton Plantation.
- Phase 3: Buildings & common areas most distant and least visible.
- Phase 4: Roads along ocean front.



**NOTES:**  
 1. This plan is a guide to the systematic implementation of the planting phase contained herein. The goals of this Planting Plan are to:  
 - Allow for the cohesive implementation of particular plant material in such a way that all communities within Kingsnton Plantation can attain a level of enhancement.  
 - Promote a total enhancement to create visible form and function - Queensway Blvd. & Lake Dr.

Atlantic Ocean





















618 Charles Street  
 James H. Hester  
 Professional Engineer  
 License No. 10000  
 State of South Carolina  
 www.jhh-engineering.com  
 www.jhh-engineering.com

Site Development Plans  
**Kingston Plantation**  
**Landscape Master Plan**  
 prepared for:  
**Horry County • South Carolina**  
**Kingston Plantation**  
**Master Association**

PROJECT NUMBER  
 18-004

RELEASE  
 Review

DATE  
 09/22/18

REVISIONS



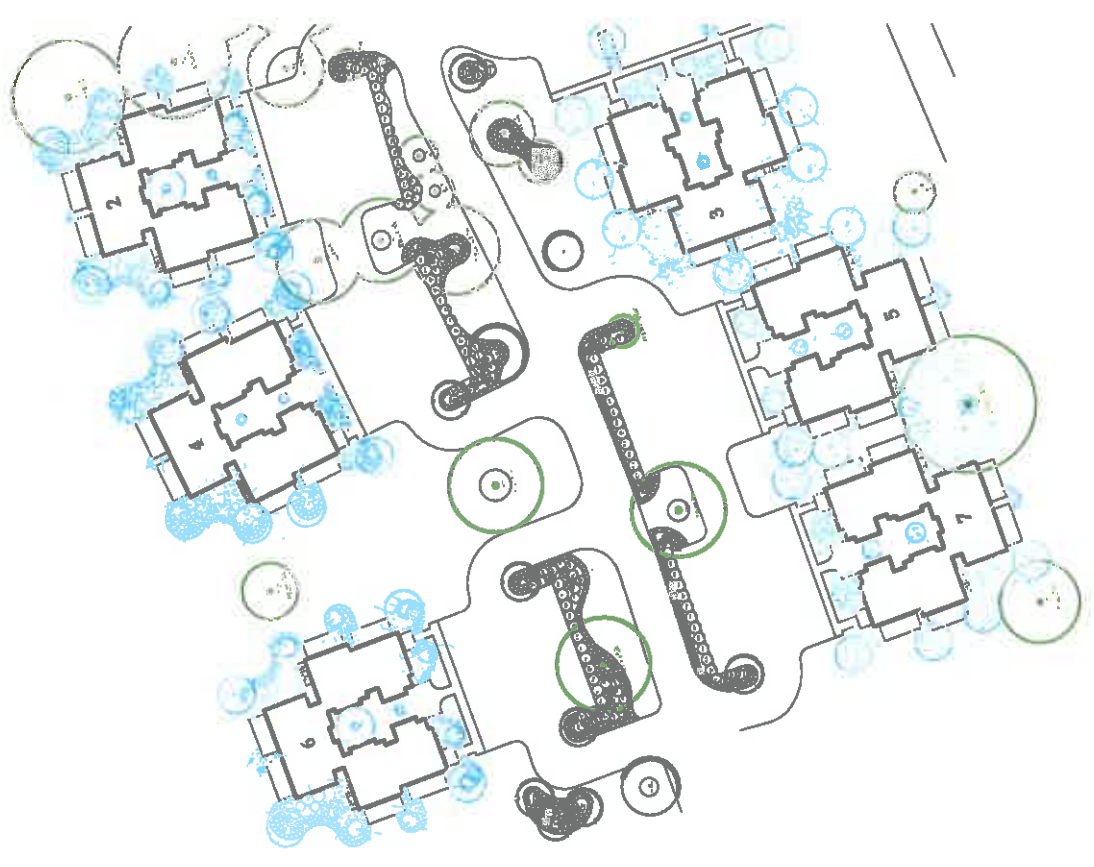
SHEET TITLE  
**Combined Terrain  
 Common Area Planting**

SHEET NUMBER  
**L-5.8**



Reference Map

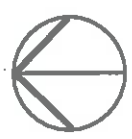
\*See Planting Schedule on sheet 5.9



For Review Only – Not for Construction!



Scale: 1" = 20'



North

Site: Residential/Office  
 Date: 09/22/18  
 Drawn: JHH  
 Title: See Sheet for the Complete Site Plan/Accessory





610 Chestnut Street  
 Myrtle Beach, SC 29577  
 252.335.5555 Fax: 252.335.5555  
 www.environmental.com

The following is a list of the  
 members of the firm who are  
 qualified to provide the services  
 described in this contract. The  
 names of the members of the firm  
 who are qualified to provide the  
 services described in this contract  
 are listed below. The names of the  
 members of the firm who are  
 qualified to provide the services  
 described in this contract are  
 listed below.

PROJECT

Site Development Plans  
 Kingstons Plantation  
 Landscape Master Plan  
 Honey County - South Carolina  
 Kingstons Plantation  
 Master Association  
 prepared for

PROJECT NUMBER  
18-024

RELEASE  
Conceptual

DATE  
09/04/18

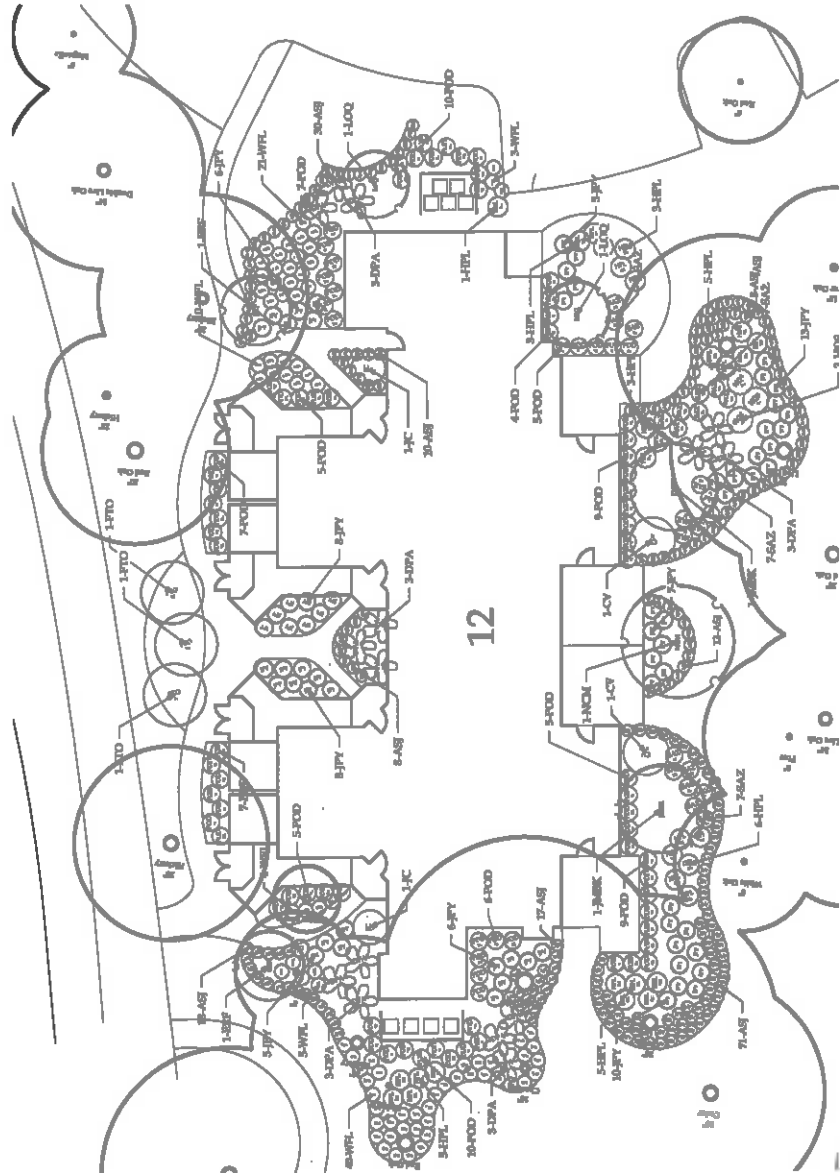
REVISIONS



SHEET TITLE  
West Hyde Park  
Building #12

SHEET NUMBER  
L-8.12

© 2018 ENVIRONMENTAL CONCEPTS, LLC



For Review Only - Not for Construction!



North



Scale: 1" = 10'



418 Chemical Street  
 Raleigh, NC 27607  
 919.435.7899 Fax: 919.772.2899

It is the policy of the State of North Carolina to encourage the development and use of the State's natural resources. The State's natural resources are a part of the State's heritage and are to be preserved and protected for the benefit of the people of the State. The State's natural resources are to be managed in a sustainable manner and to be used in a way that does not harm the environment. The State's natural resources are to be managed in a way that is consistent with the State's long-term interests and the interests of the people of the State.

PROJECT

Site Development Plans  
 Kingsston Plantation  
 Landscape Master Plan  
 Horry County - South Carolina  
 prepared for  
 Kingsston Plantation  
 Master Association

PROJECT NUMBER

19-026

RELEASE

Conceptual

DATE

09/04/18

REVISIONS

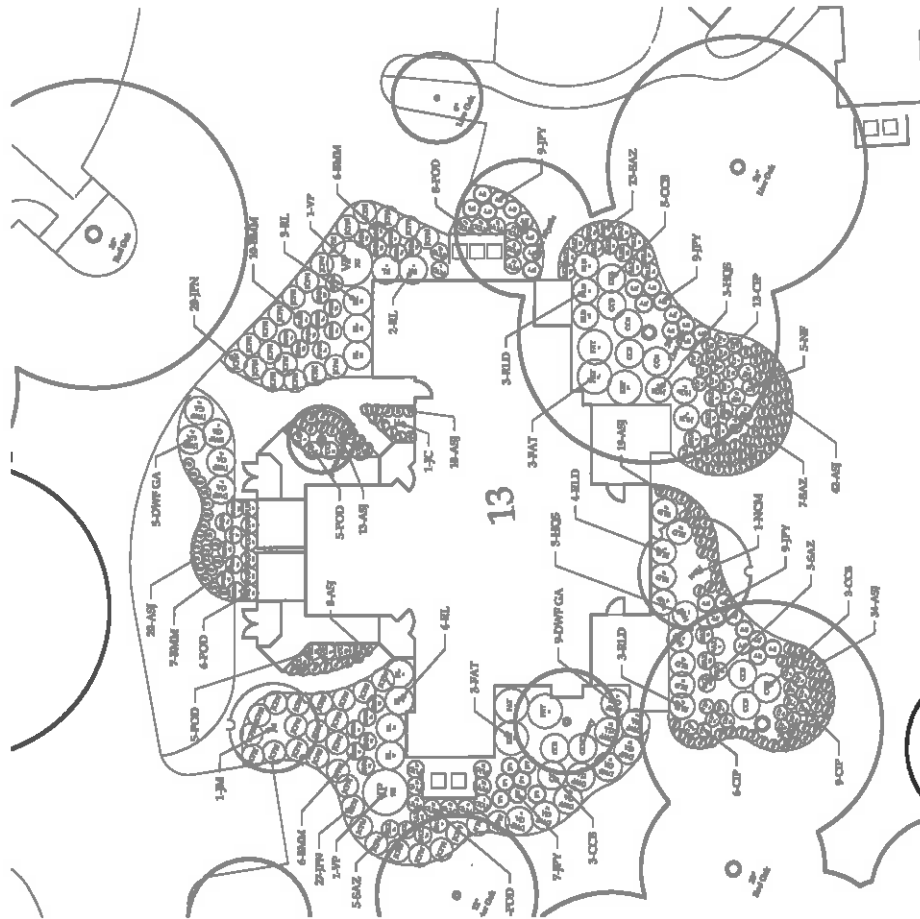


SHEET TITLE

West Hyde Park  
 Building #723

SHEET NUMBER

L-8.13



For Review Only -- Not for Construction!



North



Scale: 1" = 30'

















618 Chestnut Road  
 Kingsport, TN 37603  
 615-597-1111 Fax: 615-597-1199  
 www.kingsportplantation.com

PROJECT  
 Kingsport Plantation  
 Kingsport Plantation  
 Kingsport Plantation

Site Development Plans  
 Kingsport Plantation  
 Landscape Master Plan  
 Horry County - South Carolina  
 Prepared for  
 Kingsport Plantation  
 Master Association

PROJECT NUMBER  
 14-024

RELEASE  
 Conceptual

DATE  
 09/04/18

REVISIONS

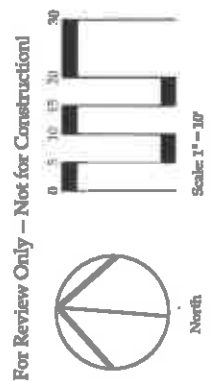
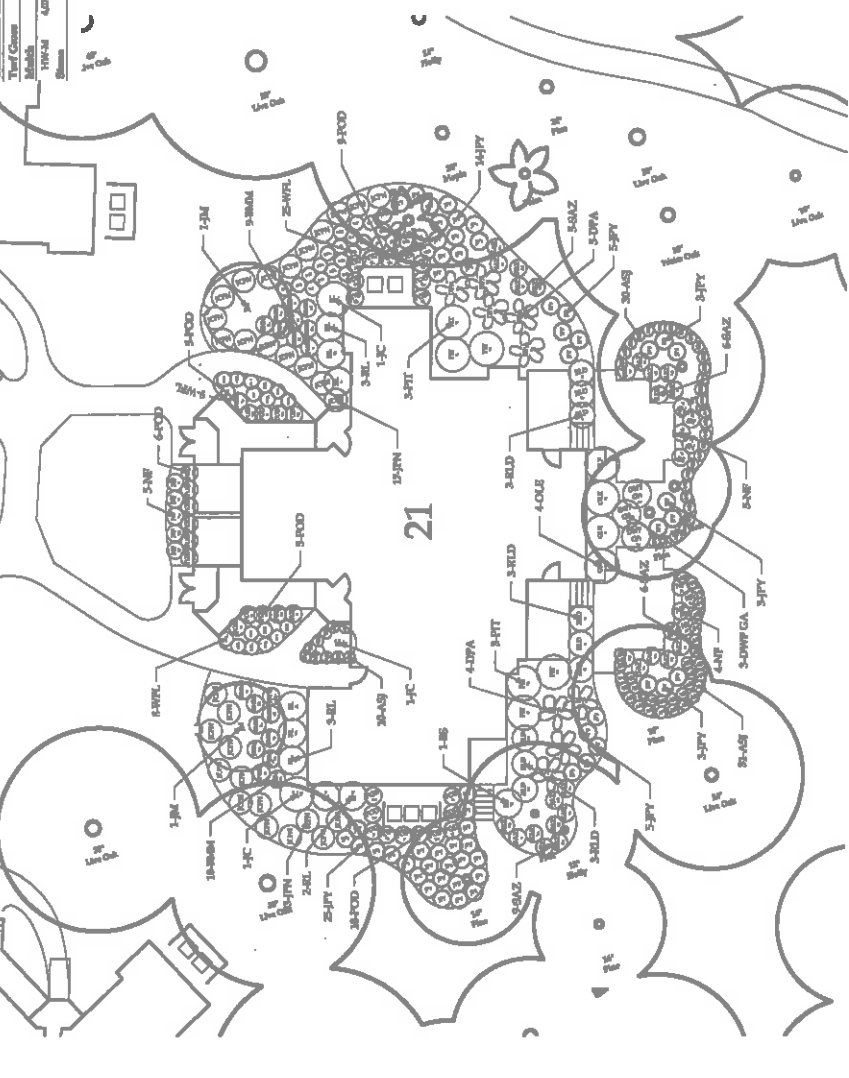


SHEET TITLE  
 West Hyde Park  
 Building #21

SHEET NUMBER  
 L-8.21

Planting Schedule - Building 21

Item	Quantity	Common Name	Latin Name	Substrate Size	Spacing	Comments
1	1	Japanese Maple	<i>Acer palmatum</i>	1 - 20" HT	AS/ORN	
2	1	Yew	<i>Taxus canadensis</i>	7 GALLON	7' OC	
3	1	Japanese Maple	<i>Acer palmatum</i>	7 GALLON	7' OC	
4	1	Japanese Maple	<i>Acer palmatum</i>	7 GALLON	7' OC	
5	1	Japanese Maple	<i>Acer palmatum</i>	7 GALLON	7' OC	
6	1	Japanese Maple	<i>Acer palmatum</i>	7 GALLON	7' OC	
7	1	Japanese Maple	<i>Acer palmatum</i>	7 GALLON	7' OC	
8	1	Japanese Maple	<i>Acer palmatum</i>	7 GALLON	7' OC	
9	1	Japanese Maple	<i>Acer palmatum</i>	7 GALLON	7' OC	
10	1	Japanese Maple	<i>Acer palmatum</i>	7 GALLON	7' OC	
11	1	Japanese Maple	<i>Acer palmatum</i>	7 GALLON	7' OC	
12	1	Japanese Maple	<i>Acer palmatum</i>	7 GALLON	7' OC	
13	1	Japanese Maple	<i>Acer palmatum</i>	7 GALLON	7' OC	
14	1	Japanese Maple	<i>Acer palmatum</i>	7 GALLON	7' OC	
15	1	Japanese Maple	<i>Acer palmatum</i>	7 GALLON	7' OC	
16	1	Japanese Maple	<i>Acer palmatum</i>	7 GALLON	7' OC	
17	1	Japanese Maple	<i>Acer palmatum</i>	7 GALLON	7' OC	
18	1	Japanese Maple	<i>Acer palmatum</i>	7 GALLON	7' OC	
19	1	Japanese Maple	<i>Acer palmatum</i>	7 GALLON	7' OC	
20	1	Japanese Maple	<i>Acer palmatum</i>	7 GALLON	7' OC	
21	1	Japanese Maple	<i>Acer palmatum</i>	7 GALLON	7' OC	
22	1	Japanese Maple	<i>Acer palmatum</i>	7 GALLON	7' OC	
23	1	Japanese Maple	<i>Acer palmatum</i>	7 GALLON	7' OC	
24	1	Japanese Maple	<i>Acer palmatum</i>	7 GALLON	7' OC	
25	1	Japanese Maple	<i>Acer palmatum</i>	7 GALLON	7' OC	
26	1	Japanese Maple	<i>Acer palmatum</i>	7 GALLON	7' OC	
27	1	Japanese Maple	<i>Acer palmatum</i>	7 GALLON	7' OC	
28	1	Japanese Maple	<i>Acer palmatum</i>	7 GALLON	7' OC	
29	1	Japanese Maple	<i>Acer palmatum</i>	7 GALLON	7' OC	
30	1	Japanese Maple	<i>Acer palmatum</i>	7 GALLON	7' OC	
31	1	Japanese Maple	<i>Acer palmatum</i>	7 GALLON	7' OC	
32	1	Japanese Maple	<i>Acer palmatum</i>	7 GALLON	7' OC	
33	1	Japanese Maple	<i>Acer palmatum</i>	7 GALLON	7' OC	
34	1	Japanese Maple	<i>Acer palmatum</i>	7 GALLON	7' OC	
35	1	Japanese Maple	<i>Acer palmatum</i>	7 GALLON	7' OC	
36	1	Japanese Maple	<i>Acer palmatum</i>	7 GALLON	7' OC	
37	1	Japanese Maple	<i>Acer palmatum</i>	7 GALLON	7' OC	
38	1	Japanese Maple	<i>Acer palmatum</i>	7 GALLON	7' OC	
39	1	Japanese Maple	<i>Acer palmatum</i>	7 GALLON	7' OC	
40	1	Japanese Maple	<i>Acer palmatum</i>	7 GALLON	7' OC	
41	1	Japanese Maple	<i>Acer palmatum</i>	7 GALLON	7' OC	
42	1	Japanese Maple	<i>Acer palmatum</i>	7 GALLON	7' OC	
43	1	Japanese Maple	<i>Acer palmatum</i>	7 GALLON	7' OC	
44	1	Japanese Maple	<i>Acer palmatum</i>	7 GALLON	7' OC	
45	1	Japanese Maple	<i>Acer palmatum</i>	7 GALLON	7' OC	
46	1	Japanese Maple	<i>Acer palmatum</i>	7 GALLON	7' OC	
47	1	Japanese Maple	<i>Acer palmatum</i>	7 GALLON	7' OC	
48	1	Japanese Maple	<i>Acer palmatum</i>	7 GALLON	7' OC	
49	1	Japanese Maple	<i>Acer palmatum</i>	7 GALLON	7' OC	
50	1	Japanese Maple	<i>Acer palmatum</i>	7 GALLON	7' OC	
51	1	Japanese Maple	<i>Acer palmatum</i>	7 GALLON	7' OC	
52	1	Japanese Maple	<i>Acer palmatum</i>	7 GALLON	7' OC	
53	1	Japanese Maple	<i>Acer palmatum</i>	7 GALLON	7' OC	
54	1	Japanese Maple	<i>Acer palmatum</i>	7 GALLON	7' OC	
55	1	Japanese Maple	<i>Acer palmatum</i>	7 GALLON	7' OC	
56	1	Japanese Maple	<i>Acer palmatum</i>	7 GALLON	7' OC	
57	1	Japanese Maple	<i>Acer palmatum</i>	7 GALLON	7' OC	
58	1	Japanese Maple	<i>Acer palmatum</i>	7 GALLON	7' OC	
59	1	Japanese Maple	<i>Acer palmatum</i>	7 GALLON	7' OC	
60	1	Japanese Maple	<i>Acer palmatum</i>	7 GALLON	7' OC	
61	1	Japanese Maple	<i>Acer palmatum</i>	7 GALLON	7' OC	
62	1	Japanese Maple	<i>Acer palmatum</i>	7 GALLON	7' OC	
63	1	Japanese Maple	<i>Acer palmatum</i>	7 GALLON	7' OC	
64	1	Japanese Maple	<i>Acer palmatum</i>	7 GALLON	7' OC	
65	1	Japanese Maple	<i>Acer palmatum</i>	7 GALLON	7' OC	
66	1	Japanese Maple	<i>Acer palmatum</i>	7 GALLON	7' OC	
67	1	Japanese Maple	<i>Acer palmatum</i>	7 GALLON	7' OC	
68	1	Japanese Maple	<i>Acer palmatum</i>	7 GALLON	7' OC	
69	1	Japanese Maple	<i>Acer palmatum</i>	7 GALLON	7' OC	
70	1	Japanese Maple	<i>Acer palmatum</i>	7 GALLON	7' OC	
71	1	Japanese Maple	<i>Acer palmatum</i>	7 GALLON	7' OC	
72	1	Japanese Maple	<i>Acer palmatum</i>	7 GALLON	7' OC	
73	1	Japanese Maple	<i>Acer palmatum</i>	7 GALLON	7' OC	
74	1	Japanese Maple	<i>Acer palmatum</i>	7 GALLON	7' OC	
75	1	Japanese Maple	<i>Acer palmatum</i>	7 GALLON	7' OC	
76	1	Japanese Maple	<i>Acer palmatum</i>	7 GALLON	7' OC	
77	1	Japanese Maple	<i>Acer palmatum</i>	7 GALLON	7' OC	
78	1	Japanese Maple	<i>Acer palmatum</i>	7 GALLON	7' OC	
79	1	Japanese Maple	<i>Acer palmatum</i>	7 GALLON	7' OC	
80	1	Japanese Maple	<i>Acer palmatum</i>	7 GALLON	7' OC	
81	1	Japanese Maple	<i>Acer palmatum</i>	7 GALLON	7' OC	
82	1	Japanese Maple	<i>Acer palmatum</i>	7 GALLON	7' OC	
83	1	Japanese Maple	<i>Acer palmatum</i>	7 GALLON	7' OC	
84	1	Japanese Maple	<i>Acer palmatum</i>	7 GALLON	7' OC	
85	1	Japanese Maple	<i>Acer palmatum</i>	7 GALLON	7' OC	
86	1	Japanese Maple	<i>Acer palmatum</i>	7 GALLON	7' OC	
87	1	Japanese Maple	<i>Acer palmatum</i>	7 GALLON	7' OC	
88	1	Japanese Maple	<i>Acer palmatum</i>	7 GALLON	7' OC	
89	1	Japanese Maple	<i>Acer palmatum</i>	7 GALLON	7' OC	
90	1	Japanese Maple	<i>Acer palmatum</i>	7 GALLON	7' OC	
91	1	Japanese Maple	<i>Acer palmatum</i>	7 GALLON	7' OC	
92	1	Japanese Maple	<i>Acer palmatum</i>	7 GALLON	7' OC	
93	1	Japanese Maple	<i>Acer palmatum</i>	7 GALLON	7' OC	
94	1	Japanese Maple	<i>Acer palmatum</i>	7 GALLON	7' OC	
95	1	Japanese Maple	<i>Acer palmatum</i>	7 GALLON	7' OC	
96	1	Japanese Maple	<i>Acer palmatum</i>	7 GALLON	7' OC	
97	1	Japanese Maple	<i>Acer palmatum</i>	7 GALLON	7' OC	
98	1	Japanese Maple	<i>Acer palmatum</i>	7 GALLON	7' OC	
99	1	Japanese Maple	<i>Acer palmatum</i>	7 GALLON	7' OC	
100	1	Japanese Maple	<i>Acer palmatum</i>	7 GALLON	7' OC	



For Review Only - Not for Construction



AIR Certified Board  
 4000 North Carolina Highway 101  
 Raleigh, NC 27617  
 919-733-7777 Fax 919-733-7779  
 www.nc.gov

Site Development Plans  
**Kingston Plantation**  
 Landscape Master Plan  
 Horry County, South Carolina  
 Prepared for  
**Kingston Plantation**  
 Master Association

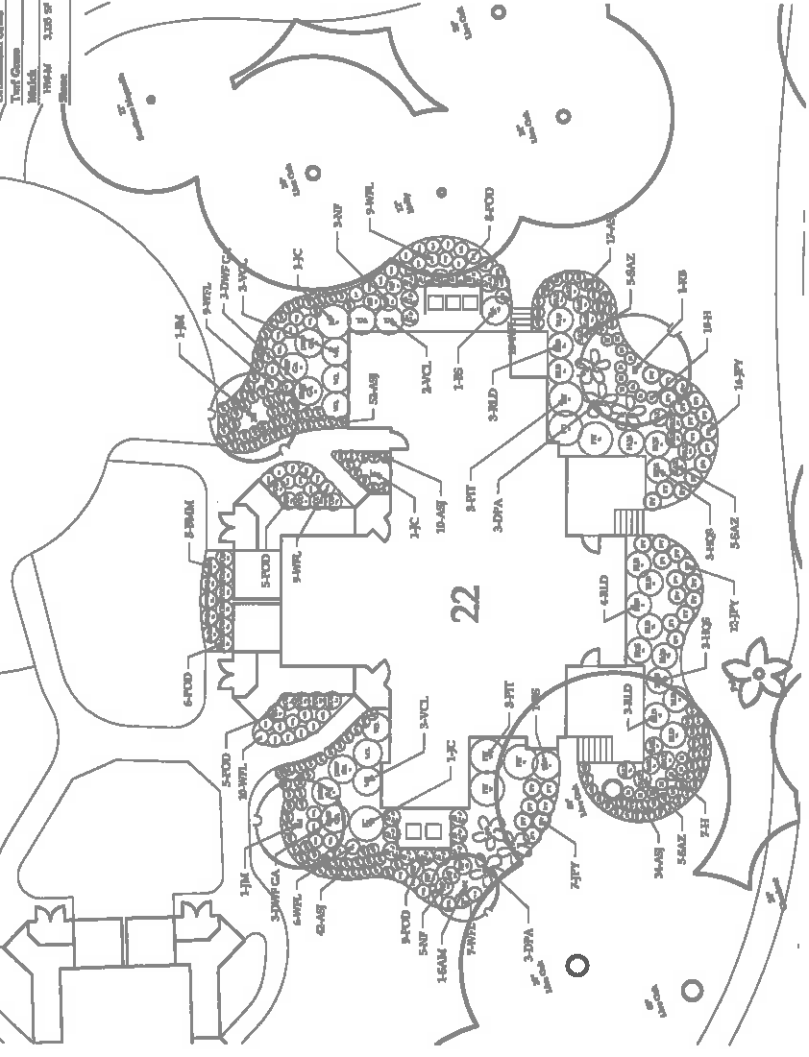
PROJECT NUMBER  
 19-024  
 RELEASE  
 Conceptual  
 DATE  
 09/04/18  
 REVISIONS



SHEET TITLE  
 West Hyde Park  
 Building #22  
 SHEET NUMBER  
 L-8.22

**Planting Schedule - Building 22**

Symbol	Quantity	Common Name	Latin Name	Scheduled Size	Spending	Comments
1	1	Downy Woodpecker	<i>Caprimulgus vociferans</i>	14"-12" HT	ASBROWN	
2	2	Japanese Maple	<i>Acer palmatum</i>	8"-20" HT	ASBROWN	
3	1	Flowering Dogwood	<i>Flowering Dogwood</i>	8"-20" HT	ASBROWN	
4	30	Year Round Hydrangea	<i>Hydrangea macrophylla</i>	7 GALLON	POC	
5	30	Japanese Camellia	<i>Camellia japonica</i>	7 GALLON	POC	
6	4	Hydrangea Opulenta	<i>Hydrangea opulenta</i>	7 GALLON	POC	
7	4	Japanese Maple	<i>Acer palmatum</i>	7 GALLON	POC	
8	20	Small Dogwood	<i>Small Dogwood</i>	3 GALLON	ASBROWN	
9	20	Small Japanese Maple	<i>Small Japanese Maple</i>	3 GALLON	ASBROWN	
10	20	Small Dogwood	<i>Small Dogwood</i>	3 GALLON	ASBROWN	
11	20	Small Japanese Maple	<i>Small Japanese Maple</i>	3 GALLON	ASBROWN	
12	20	Small Dogwood	<i>Small Dogwood</i>	3 GALLON	ASBROWN	
13	20	Small Japanese Maple	<i>Small Japanese Maple</i>	3 GALLON	ASBROWN	
14	20	Small Dogwood	<i>Small Dogwood</i>	3 GALLON	ASBROWN	
15	20	Small Japanese Maple	<i>Small Japanese Maple</i>	3 GALLON	ASBROWN	
16	20	Small Dogwood	<i>Small Dogwood</i>	3 GALLON	ASBROWN	
17	20	Small Japanese Maple	<i>Small Japanese Maple</i>	3 GALLON	ASBROWN	
18	20	Small Dogwood	<i>Small Dogwood</i>	3 GALLON	ASBROWN	
19	20	Small Japanese Maple	<i>Small Japanese Maple</i>	3 GALLON	ASBROWN	
20	20	Small Dogwood	<i>Small Dogwood</i>	3 GALLON	ASBROWN	
21	20	Small Japanese Maple	<i>Small Japanese Maple</i>	3 GALLON	ASBROWN	
22	20	Small Dogwood	<i>Small Dogwood</i>	3 GALLON	ASBROWN	
23	20	Small Japanese Maple	<i>Small Japanese Maple</i>	3 GALLON	ASBROWN	
24	20	Small Dogwood	<i>Small Dogwood</i>	3 GALLON	ASBROWN	
25	20	Small Japanese Maple	<i>Small Japanese Maple</i>	3 GALLON	ASBROWN	
26	20	Small Dogwood	<i>Small Dogwood</i>	3 GALLON	ASBROWN	
27	20	Small Japanese Maple	<i>Small Japanese Maple</i>	3 GALLON	ASBROWN	
28	20	Small Dogwood	<i>Small Dogwood</i>	3 GALLON	ASBROWN	
29	20	Small Japanese Maple	<i>Small Japanese Maple</i>	3 GALLON	ASBROWN	
30	20	Small Dogwood	<i>Small Dogwood</i>	3 GALLON	ASBROWN	
31	20	Small Japanese Maple	<i>Small Japanese Maple</i>	3 GALLON	ASBROWN	
32	20	Small Dogwood	<i>Small Dogwood</i>	3 GALLON	ASBROWN	
33	20	Small Japanese Maple	<i>Small Japanese Maple</i>	3 GALLON	ASBROWN	
34	20	Small Dogwood	<i>Small Dogwood</i>	3 GALLON	ASBROWN	
35	20	Small Japanese Maple	<i>Small Japanese Maple</i>	3 GALLON	ASBROWN	
36	20	Small Dogwood	<i>Small Dogwood</i>	3 GALLON	ASBROWN	
37	20	Small Japanese Maple	<i>Small Japanese Maple</i>	3 GALLON	ASBROWN	
38	20	Small Dogwood	<i>Small Dogwood</i>	3 GALLON	ASBROWN	
39	20	Small Japanese Maple	<i>Small Japanese Maple</i>	3 GALLON	ASBROWN	
40	20	Small Dogwood	<i>Small Dogwood</i>	3 GALLON	ASBROWN	
41	20	Small Japanese Maple	<i>Small Japanese Maple</i>	3 GALLON	ASBROWN	
42	20	Small Dogwood	<i>Small Dogwood</i>	3 GALLON	ASBROWN	
43	20	Small Japanese Maple	<i>Small Japanese Maple</i>	3 GALLON	ASBROWN	
44	20	Small Dogwood	<i>Small Dogwood</i>	3 GALLON	ASBROWN	
45	20	Small Japanese Maple	<i>Small Japanese Maple</i>	3 GALLON	ASBROWN	
46	20	Small Dogwood	<i>Small Dogwood</i>	3 GALLON	ASBROWN	
47	20	Small Japanese Maple	<i>Small Japanese Maple</i>	3 GALLON	ASBROWN	
48	20	Small Dogwood	<i>Small Dogwood</i>	3 GALLON	ASBROWN	
49	20	Small Japanese Maple	<i>Small Japanese Maple</i>	3 GALLON	ASBROWN	
50	20	Small Dogwood	<i>Small Dogwood</i>	3 GALLON	ASBROWN	



For Review Only - Not for Construction  
  
 North  
  
 Scale: 1" = 10'



618 Chapel Hill Road  
 Raleigh, NC 27607  
 919-874-7977 Fax 919-874-8999

Site Development Plans  
 Kingston Plantation  
 Landscape Master Plan  
 Horry County - South Carolina  
 Prepared for  
 Kingston Plantation  
 Master Association

PROJECT NUMBER  
 19-024

RELEASE  
 Conceptual

DATE  
 09/04/18

REVISIONS



SHEET TITLE  
 West Hyde Park  
 Building #23

SHEET NUMBER  
 L-8-23

**Planting Schedule - Building 23**

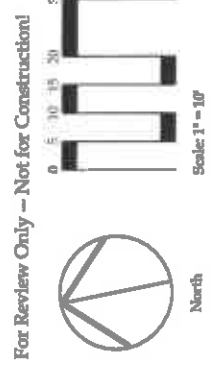
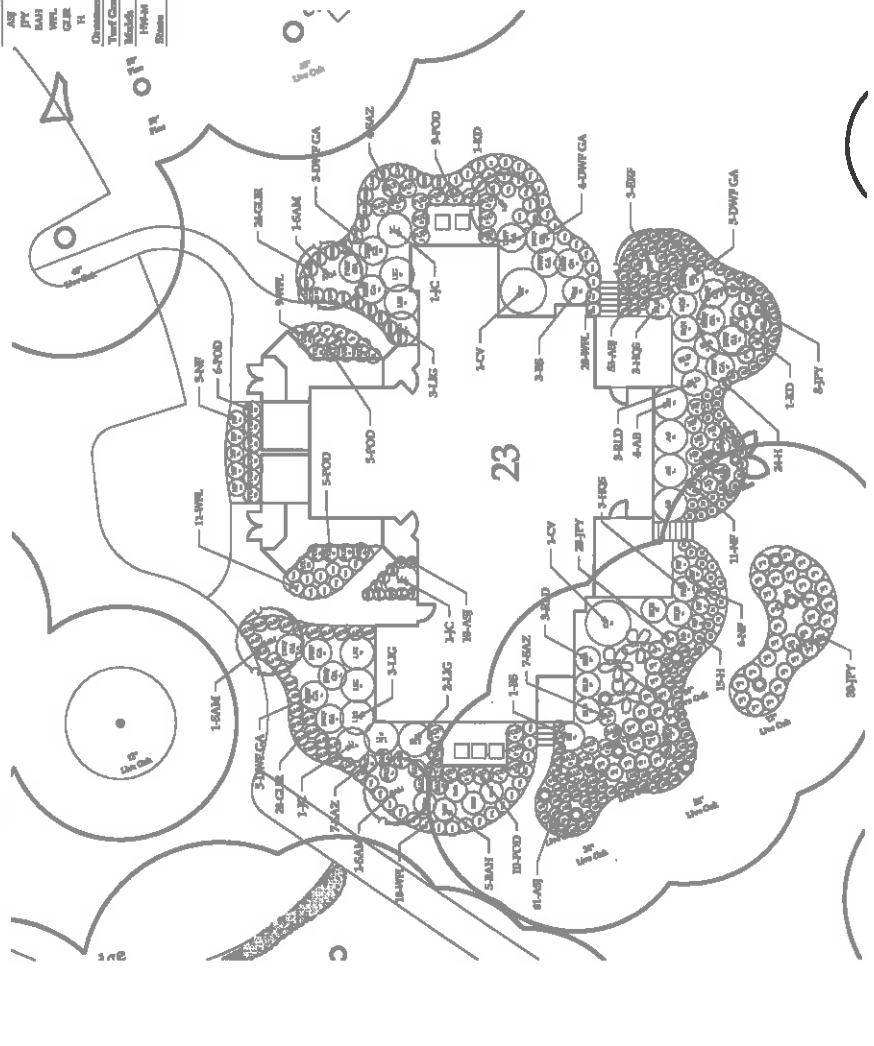
Item	Symbol	Quantity	Common Name	Latin Name	Estimated Size	Spacing	Comments
1	UG	4	Japanese Ligustrum	Ligustrum japonicum	7 GALLON	ASBOWN	
2	RD	2	Italy Ivy (Asian Disjunct)	Clematis integrifolia	2" CAL	ASBOWN	
3	RD	2	Italian Ligustrum	Ligustrum italica	8-10" DBH	ASBOWN	
4	RD	2	Forest Pansy (Red)	Viola ssp.	6-8" DBH	ASBOWN	
5	PCD	18	View Plantings	Podocarpus neriifolius	7 GALLON	F.O.C.	
6	PC	3	Japanese Camellia	Camellia japonica	3 GALLON	F.O.C.	
7	MR	22	Pigeonberry (Hemiparasitic)	Persea caroliniana 'Vigorous'	3 GALLON	F.O.C.	
8	RS	4	Japanese Elm	Ulmus japonicus	3 GALLON	F.O.C.	
9	AB	4	American Beautyberry	Callicarpa americana	3 GALLON	F.O.C.	
10	SD	6	Dwarf Ligustrum	Ligustrum chinensis 'Variegata'	3 GALLON	F.O.C.	
11	DVA	27	Strawford Azalea	Indigofera chinensis	3 GALLON	F.O.C.	
12	DPT-CA	27	Strawford Azalea	Indigofera chinensis	3 GALLON	F.O.C.	
13	PC	4	Japanese Camellia	Camellia japonica	3 GALLON	F.O.C.	
14	HES	4	Home Choke (Climax)	Hydrangea paniculata 'Home Queen'	3 GALLON	F.O.C.	
15	CV	2	Chickadee (Wintergreen)	Vaccinium canadense	3 GALLON	F.O.C.	
<b>Comments:</b>							
16	AH	20	Asian Blue Jasmine	Yucca filamentosa	1 GALLON	Z.O.C.	
17	JY	20	Spreading Japanese Palm	Cyperus tenuiflorus	1 GALLON	Z.O.C.	
18	BAH	5	Blue Angel (Forsythia)	Forsythia viridissima	1 GALLON	Z.O.C.	
19	WPL	66	Wynona (Weigela)	Weigela florida	1 GALLON	Z.O.C.	
20	GER	52	German Iris	Iris sibirica	1 GALLON	Z.O.C.	
21	IL	28	Italian Ligustrum	Ligustrum italica	1 GALLON	Z.O.C.	

**Plant Codes**

11-WRL 11-WRL  
 11-PCD 11-PCD  
 11-AB 11-AB  
 11-SD 11-SD  
 11-PC 11-PC  
 11-HES 11-HES  
 11-CV 11-CV

**Plant Codes**

11-WRL 11-WRL  
 11-PCD 11-PCD  
 11-AB 11-AB  
 11-SD 11-SD  
 11-PC 11-PC  
 11-HES 11-HES  
 11-CV 11-CV





















**Planting Schedule - Common Area**

Item	Symbol	Quantity	Common Name	Latin Name	Estimated Size	Spacing	Comments
1	1-10	5	2nd Oak	Quercus velutina	14-18" Ht / 7" Cal.	ASBCKWH	
2	2-10	30	Blackberry	Corylus corniculata	14-18" Ht	ASBCKWH	
3	3-10	3	Blackberry	Quercus velutina	14-18" Ht / 7" Cal.	ASBCKWH	
4	4-10	15	Light Pine	Pinus strobus	14-18" Ht	ASBCKWH	
5	5-10	15	Black Pine	Pinus strobus	14-18" Ht (Fruited)	ASBCKWH	
6	6-10	15	Black Pine	Pinus strobus	14-18" Ht	ASBCKWH	
7	7-10	15	Black Pine	Pinus strobus	14-18" Ht	ASBCKWH	
8	8-10	15	Black Pine	Pinus strobus	14-18" Ht	ASBCKWH	
9	9-10	15	Black Pine	Pinus strobus	14-18" Ht	ASBCKWH	
10	10-10	15	Black Pine	Pinus strobus	14-18" Ht	ASBCKWH	
11	11-10	15	Black Pine	Pinus strobus	14-18" Ht	ASBCKWH	
12	12-10	15	Black Pine	Pinus strobus	14-18" Ht	ASBCKWH	
13	13-10	15	Black Pine	Pinus strobus	14-18" Ht	ASBCKWH	
14	14-10	15	Black Pine	Pinus strobus	14-18" Ht	ASBCKWH	
15	15-10	15	Black Pine	Pinus strobus	14-18" Ht	ASBCKWH	
16	16-10	15	Black Pine	Pinus strobus	14-18" Ht	ASBCKWH	
17	17-10	15	Black Pine	Pinus strobus	14-18" Ht	ASBCKWH	
18	18-10	15	Black Pine	Pinus strobus	14-18" Ht	ASBCKWH	
19	19-10	15	Black Pine	Pinus strobus	14-18" Ht	ASBCKWH	
20	20-10	15	Black Pine	Pinus strobus	14-18" Ht	ASBCKWH	
21	21-10	15	Black Pine	Pinus strobus	14-18" Ht	ASBCKWH	
22	22-10	15	Black Pine	Pinus strobus	14-18" Ht	ASBCKWH	
23	23-10	15	Black Pine	Pinus strobus	14-18" Ht	ASBCKWH	
24	24-10	15	Black Pine	Pinus strobus	14-18" Ht	ASBCKWH	
25	25-10	15	Black Pine	Pinus strobus	14-18" Ht	ASBCKWH	
26	26-10	15	Black Pine	Pinus strobus	14-18" Ht	ASBCKWH	
27	27-10	15	Black Pine	Pinus strobus	14-18" Ht	ASBCKWH	
28	28-10	15	Black Pine	Pinus strobus	14-18" Ht	ASBCKWH	
29	29-10	15	Black Pine	Pinus strobus	14-18" Ht	ASBCKWH	
30	30-10	15	Black Pine	Pinus strobus	14-18" Ht	ASBCKWH	
31	31-10	15	Black Pine	Pinus strobus	14-18" Ht	ASBCKWH	
32	32-10	15	Black Pine	Pinus strobus	14-18" Ht	ASBCKWH	
33	33-10	15	Black Pine	Pinus strobus	14-18" Ht	ASBCKWH	
34	34-10	15	Black Pine	Pinus strobus	14-18" Ht	ASBCKWH	
35	35-10	15	Black Pine	Pinus strobus	14-18" Ht	ASBCKWH	
36	36-10	15	Black Pine	Pinus strobus	14-18" Ht	ASBCKWH	
37	37-10	15	Black Pine	Pinus strobus	14-18" Ht	ASBCKWH	
38	38-10	15	Black Pine	Pinus strobus	14-18" Ht	ASBCKWH	
39	39-10	15	Black Pine	Pinus strobus	14-18" Ht	ASBCKWH	
40	40-10	15	Black Pine	Pinus strobus	14-18" Ht	ASBCKWH	
41	41-10	15	Black Pine	Pinus strobus	14-18" Ht	ASBCKWH	
42	42-10	15	Black Pine	Pinus strobus	14-18" Ht	ASBCKWH	
43	43-10	15	Black Pine	Pinus strobus	14-18" Ht	ASBCKWH	
44	44-10	15	Black Pine	Pinus strobus	14-18" Ht	ASBCKWH	
45	45-10	15	Black Pine	Pinus strobus	14-18" Ht	ASBCKWH	
46	46-10	15	Black Pine	Pinus strobus	14-18" Ht	ASBCKWH	
47	47-10	15	Black Pine	Pinus strobus	14-18" Ht	ASBCKWH	
48	48-10	15	Black Pine	Pinus strobus	14-18" Ht	ASBCKWH	
49	49-10	15	Black Pine	Pinus strobus	14-18" Ht	ASBCKWH	
50	50-10	15	Black Pine	Pinus strobus	14-18" Ht	ASBCKWH	
51	51-10	15	Black Pine	Pinus strobus	14-18" Ht	ASBCKWH	
52	52-10	15	Black Pine	Pinus strobus	14-18" Ht	ASBCKWH	
53	53-10	15	Black Pine	Pinus strobus	14-18" Ht	ASBCKWH	
54	54-10	15	Black Pine	Pinus strobus	14-18" Ht	ASBCKWH	
55	55-10	15	Black Pine	Pinus strobus	14-18" Ht	ASBCKWH	
56	56-10	15	Black Pine	Pinus strobus	14-18" Ht	ASBCKWH	
57	57-10	15	Black Pine	Pinus strobus	14-18" Ht	ASBCKWH	
58	58-10	15	Black Pine	Pinus strobus	14-18" Ht	ASBCKWH	
59	59-10	15	Black Pine	Pinus strobus	14-18" Ht	ASBCKWH	
60	60-10	15	Black Pine	Pinus strobus	14-18" Ht	ASBCKWH	
61	61-10	15	Black Pine	Pinus strobus	14-18" Ht	ASBCKWH	
62	62-10	15	Black Pine	Pinus strobus	14-18" Ht	ASBCKWH	
63	63-10	15	Black Pine	Pinus strobus	14-18" Ht	ASBCKWH	
64	64-10	15	Black Pine	Pinus strobus	14-18" Ht	ASBCKWH	
65	65-10	15	Black Pine	Pinus strobus	14-18" Ht	ASBCKWH	
66	66-10	15	Black Pine	Pinus strobus	14-18" Ht	ASBCKWH	
67	67-10	15	Black Pine	Pinus strobus	14-18" Ht	ASBCKWH	
68	68-10	15	Black Pine	Pinus strobus	14-18" Ht	ASBCKWH	
69	69-10	15	Black Pine	Pinus strobus	14-18" Ht	ASBCKWH	
70	70-10	15	Black Pine	Pinus strobus	14-18" Ht	ASBCKWH	
71	71-10	15	Black Pine	Pinus strobus	14-18" Ht	ASBCKWH	
72	72-10	15	Black Pine	Pinus strobus	14-18" Ht	ASBCKWH	
73	73-10	15	Black Pine	Pinus strobus	14-18" Ht	ASBCKWH	
74	74-10	15	Black Pine	Pinus strobus	14-18" Ht	ASBCKWH	
75	75-10	15	Black Pine	Pinus strobus	14-18" Ht	ASBCKWH	
76	76-10	15	Black Pine	Pinus strobus	14-18" Ht	ASBCKWH	
77	77-10	15	Black Pine	Pinus strobus	14-18" Ht	ASBCKWH	
78	78-10	15	Black Pine	Pinus strobus	14-18" Ht	ASBCKWH	
79	79-10	15	Black Pine	Pinus strobus	14-18" Ht	ASBCKWH	
80	80-10	15	Black Pine	Pinus strobus	14-18" Ht	ASBCKWH	
81	81-10	15	Black Pine	Pinus strobus	14-18" Ht	ASBCKWH	
82	82-10	15	Black Pine	Pinus strobus	14-18" Ht	ASBCKWH	
83	83-10	15	Black Pine	Pinus strobus	14-18" Ht	ASBCKWH	
84	84-10	15	Black Pine	Pinus strobus	14-18" Ht	ASBCKWH	
85	85-10	15	Black Pine	Pinus strobus	14-18" Ht	ASBCKWH	
86	86-10	15	Black Pine	Pinus strobus	14-18" Ht	ASBCKWH	
87	87-10	15	Black Pine	Pinus strobus	14-18" Ht	ASBCKWH	
88	88-10	15	Black Pine	Pinus strobus	14-18" Ht	ASBCKWH	
89	89-10	15	Black Pine	Pinus strobus	14-18" Ht	ASBCKWH	
90	90-10	15	Black Pine	Pinus strobus	14-18" Ht	ASBCKWH	
91	91-10	15	Black Pine	Pinus strobus	14-18" Ht	ASBCKWH	
92	92-10	15	Black Pine	Pinus strobus	14-18" Ht	ASBCKWH	
93	93-10	15	Black Pine	Pinus strobus	14-18" Ht	ASBCKWH	
94	94-10	15	Black Pine	Pinus strobus	14-18" Ht	ASBCKWH	
95	95-10	15	Black Pine	Pinus strobus	14-18" Ht	ASBCKWH	
96	96-10	15	Black Pine	Pinus strobus	14-18" Ht	ASBCKWH	
97	97-10	15	Black Pine	Pinus strobus	14-18" Ht	ASBCKWH	
98	98-10	15	Black Pine	Pinus strobus	14-18" Ht	ASBCKWH	
99	99-10	15	Black Pine	Pinus strobus	14-18" Ht	ASBCKWH	
100	100-10	15	Black Pine	Pinus strobus	14-18" Ht	ASBCKWH	



Scale: 1" = 20'

North

For Review Only - Not for Construction!

And Major Property Red - As Needed - To Highlight Bid In Areas Where Landscape Drains/Improvements Have Occurred (Y/N)

Scale: 1" = 20'

North

© 2018 ENVIRONMENTAL CONCEPTS, LLC



**Kingscape Master Plan**  
 Landscape Master Plan  
 Horry County • South Carolina  
 prepared for:  
**Kingson Plantation**  
 Master Association

PROJECT  
 SHEET TITLE  
 WINDOW COURT  
 COMMON AREA PLANTING  
 SHEET NUMBER  
**L-6.7**

PROJECT NUMBER  
**18-026**  
 RELEASE  
 REVIEWER  
 DATE  
**12/19/18**  
 REVISIONS



SCALE  
 1" = 20'

PROJECT NUMBER  
**18-026**  
 RELEASE  
 REVIEWER  
 DATE  
**12/19/18**  
 REVISIONS

PROJECT  
 SHEET TITLE  
 WINDOW COURT  
 COMMON AREA PLANTING  
 SHEET NUMBER  
**L-6.7**